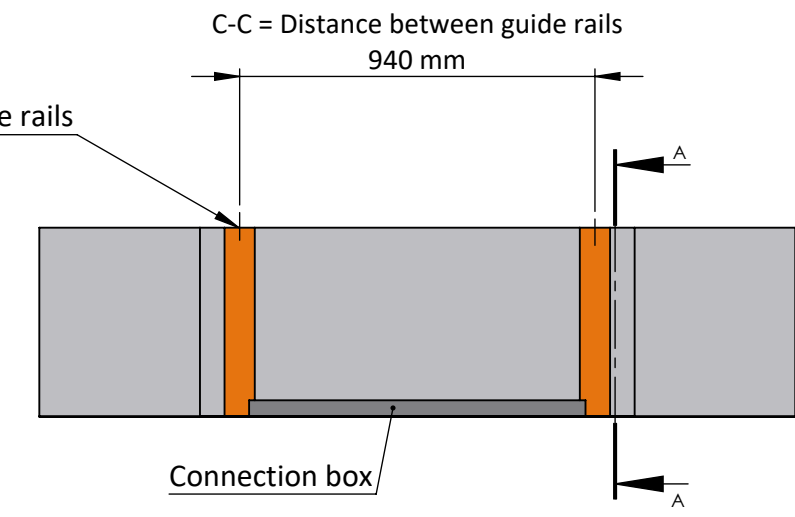
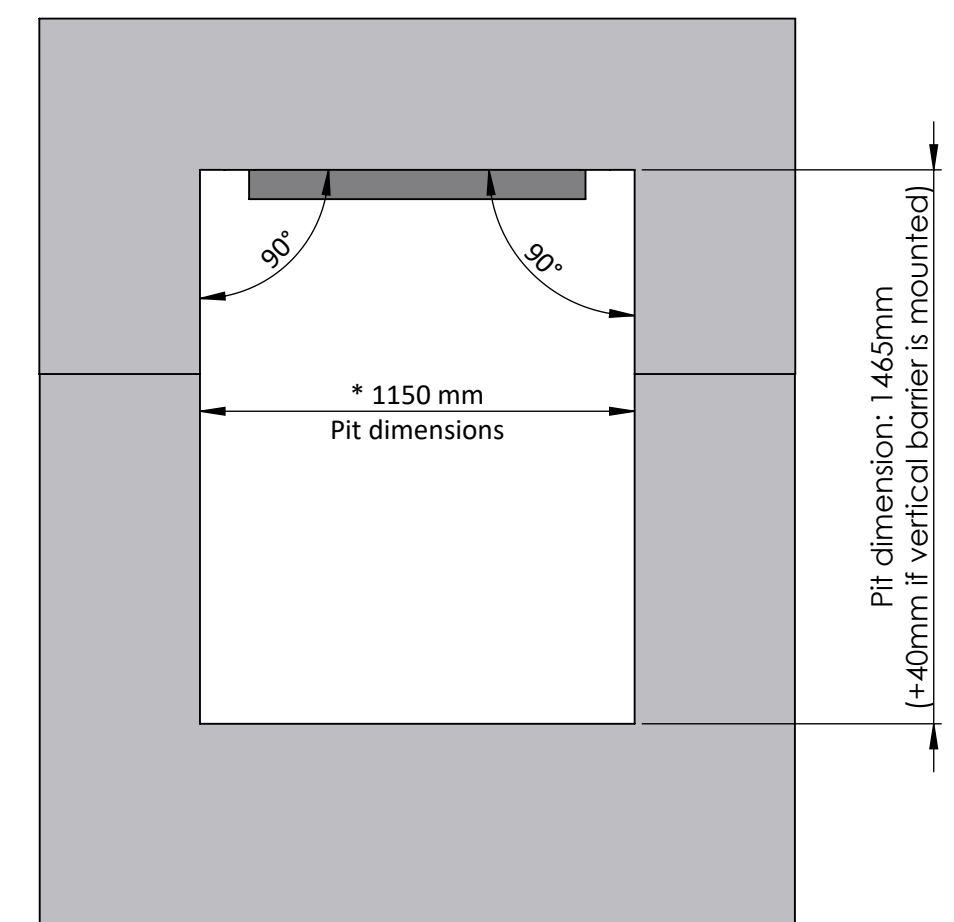
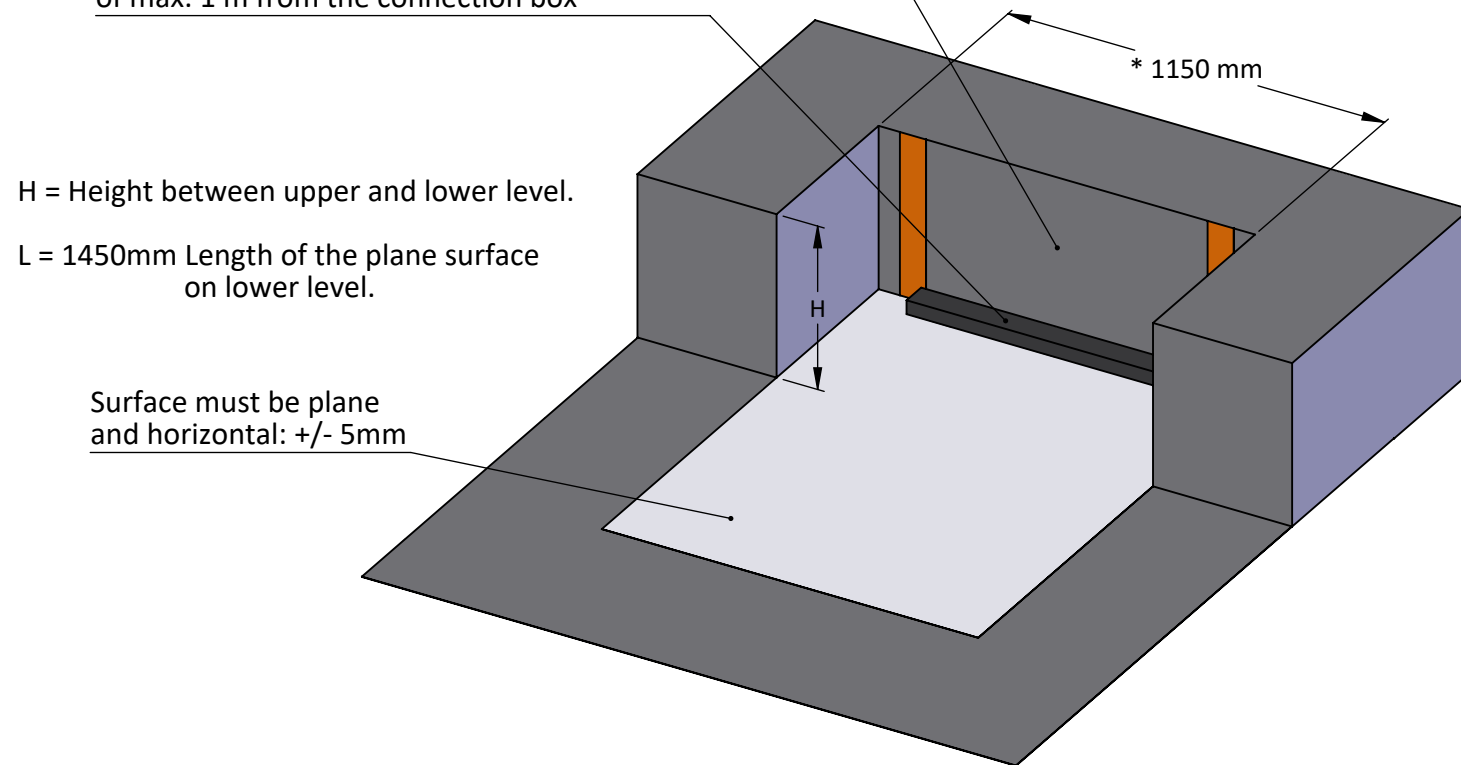


Fixing plane must be solid material for screws to guide rails



Surface must be plane and vertical

Connection box must be placed on the floor, between the guide rails.
Power supply connection must be in a distance of max. 1 m from the connection box



* Local building codes may apply

Alle rettigheder til emne tilhører Liftup

Rev.	Revision description.	EasyLift 900 V3 in building		LIFTUP	
G	-	Created date:	03-05-2016	Last change date:	27-02-2017
F	-				
E	-	Material:	- mm -	Tolerancer:	-
D	-			Sheet size:	A3
C	-	Finish:	-	Weight:	-
B	-				
				Item Number:	103179
				Version:	-
				Scale:	1:20
				Drawn by:	GC