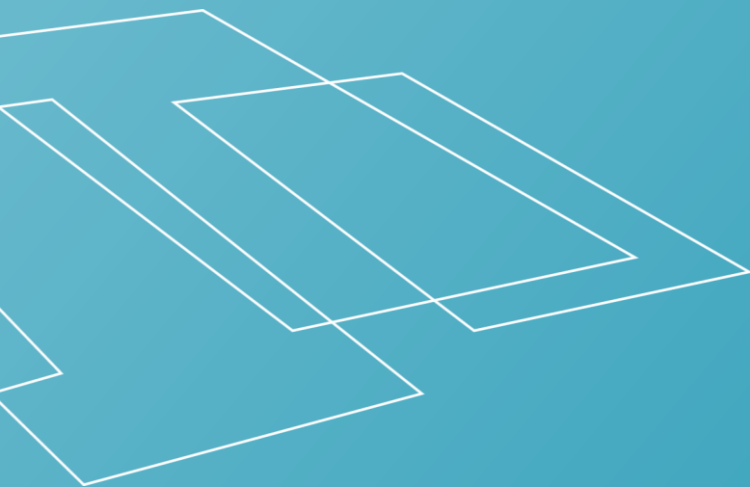


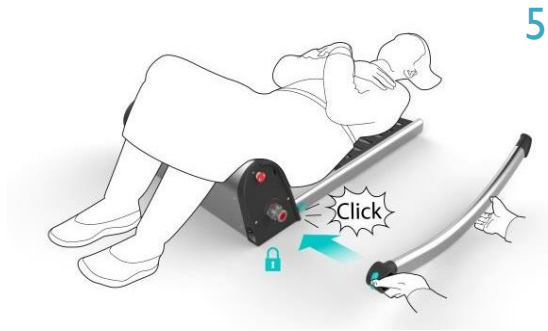


RAIZER® Quick Guide

US Version 1.3



Push the rear leg (marked red for left-hand side) onto the shaft and click into place.



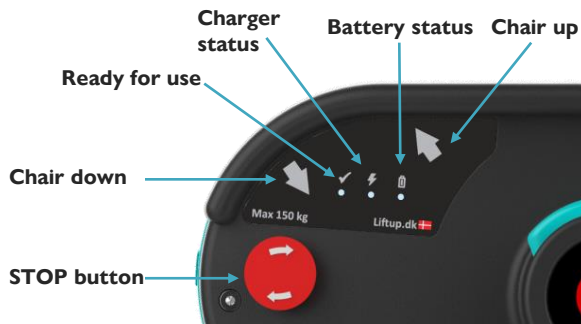
Slide the front leg (marked red for left-hand side) into the seat and click it into place.



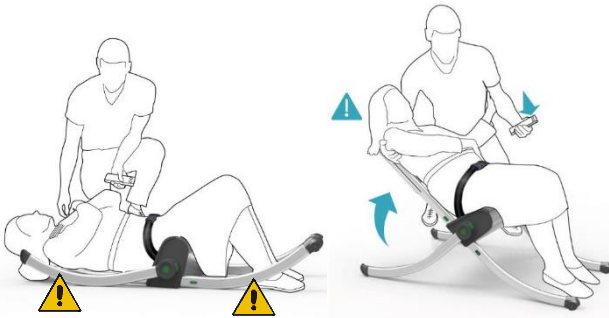
Repeat.
Green mark = right hand side



Control panel



9



Support the person's neck with one hand. Press the "up arrow" on the side panel or remote control (Supplementary equipment).

! Please note: Risk of being pinched

10



The Raizer will automatically stop when the person is in a sitting position.

11



Run the Raizer into a horizontal position and disassemble.



Use of water spray or jets prohibited



#1: 9 kg. (19,8 lbs.)
#2: 4 kg. (8,8 lbs.)



150 Kg. / 330,7 lbs.
Max. User weight



40 - 100 transfers per charge